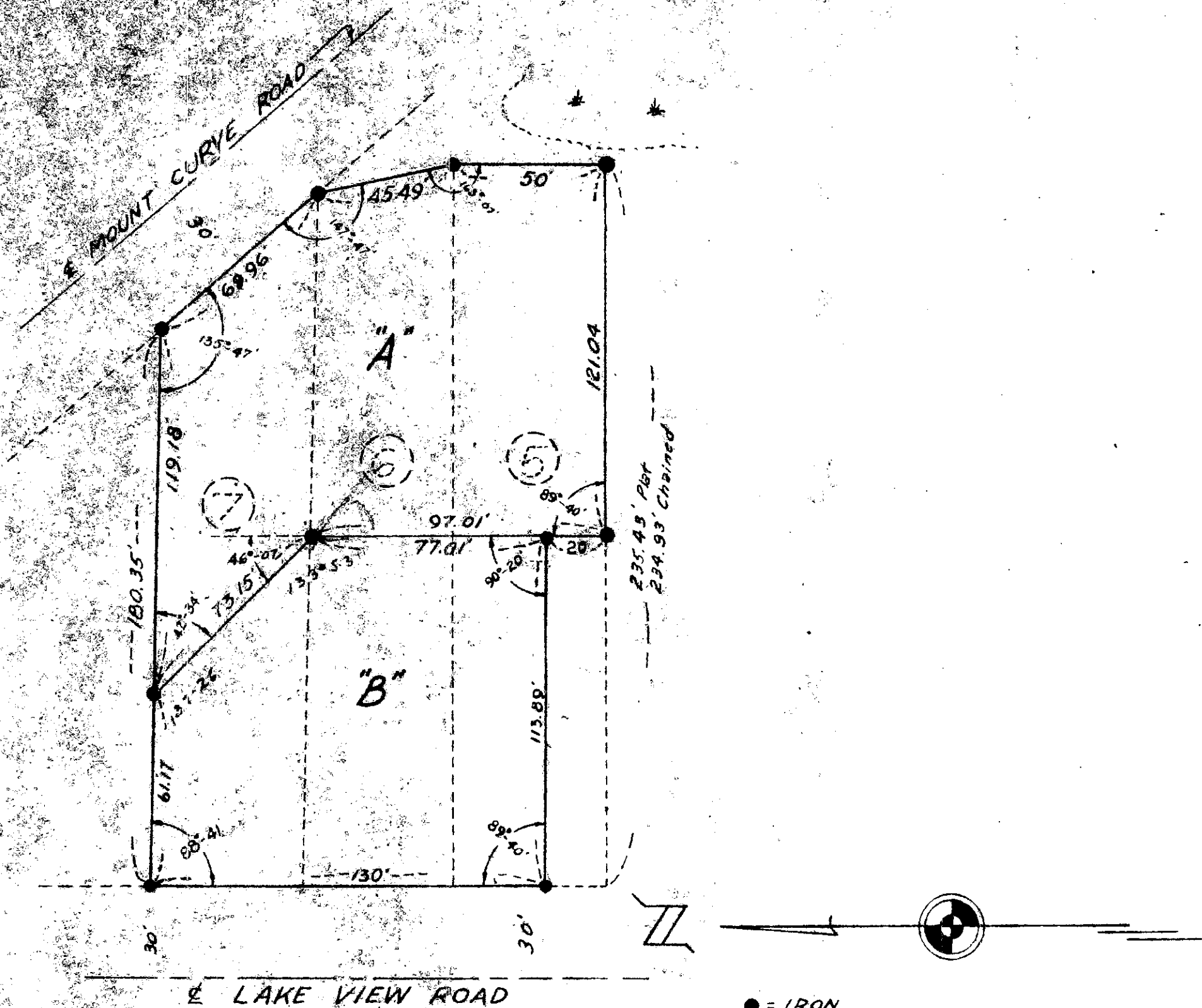


ORIGINAL 398802  
Registered Oct. 6, 1956 by 199818

# REGISTERED LAND SURVEY NO. RLS-225

HENNEPIN COUNTY, MINNESOTA  
METROPOLITAN LAND SURVEYORS & ENGINEERS, INC.



I hereby certify that in accordance with the provisions of Chapter 508, Minnesota statutes of 1949 amended, I have surveyed the following described tract of land in the County of Hennepin and State of Minnesota to wit: All of Lots 5, 6, and 7, except the South 20 feet of the West 113.89 feet of Lot 5, Block 5, Hilltop View Addition, according to the plat on file in the office of the Register of Deeds, Hennepin County, Minnesota; that the survey shown herein is a correct delineation of said survey.

Dated this 11th day of July A.D. 1953

Surveyor: Donald D. Kingley  
Minnesota Registration No. 3105

398802  
 OFFICE OF REGISTRAR OF TITLES  
 HENNEPIN COUNTY MINNESOTA  
 I hereby Certify That the within Registered Land Survey No. 225  
 of Registrar of Titles, Hennepin County, was Filed in this office  
 this 16 day of July, A.D. 1953 at 12 o'clock Noon  
DONALD C. BENNYHOFF  
 Registrar of Titles  
W. E. Messervey Deputy.

**FILED**  
 JUL 23 1953  
 ROBERT F. FITZSIMMONS, AUDITOR  
 HENNEPIN CO., MINN.  
W. E. Messervey DEPUTY

225