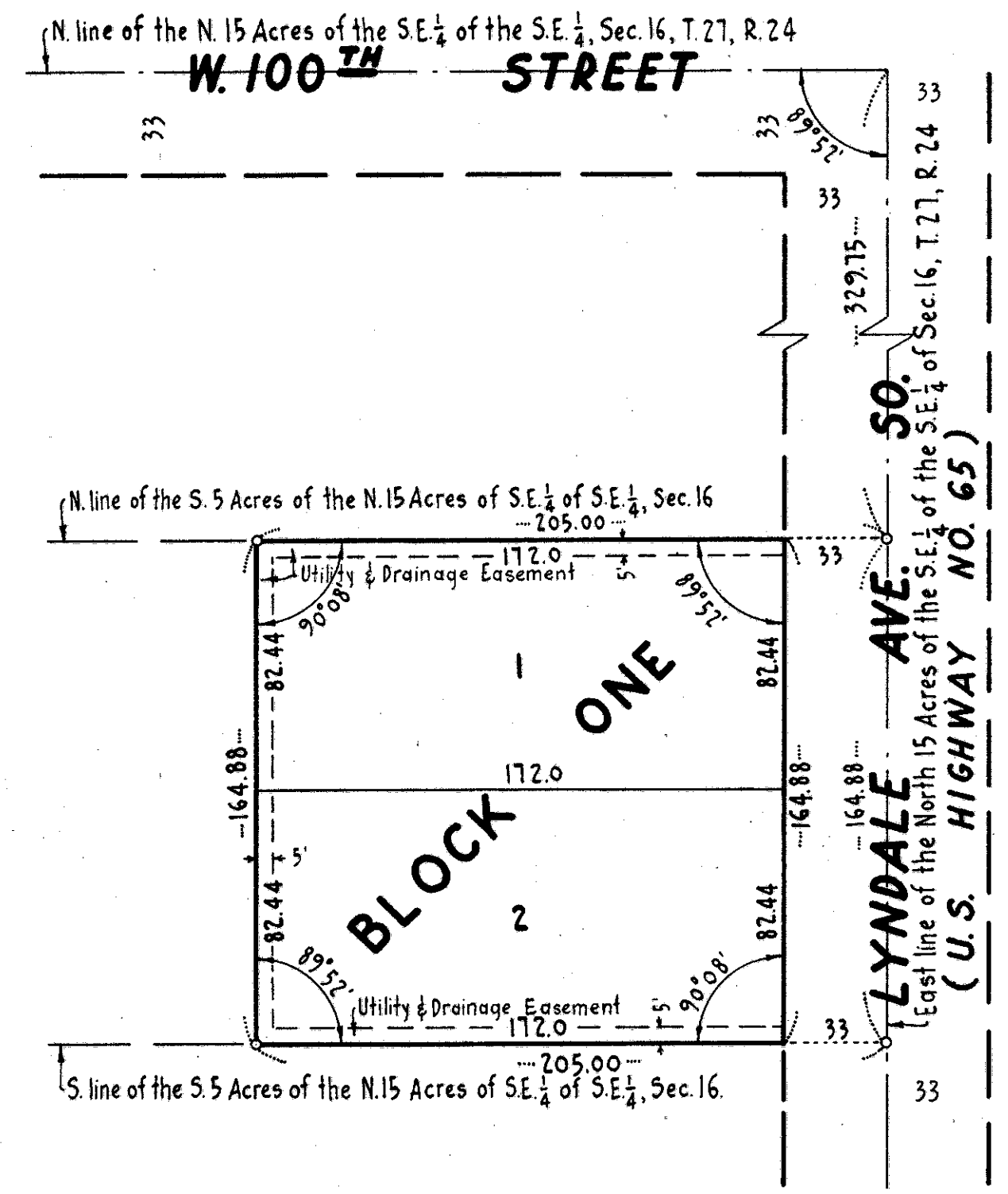
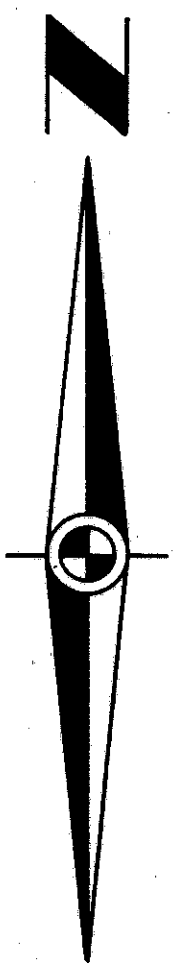


# BLIXT ADDITION

HENNEPIN COUNTY, MINNESOTA

JAMES M. HALVERSON  
SURVEYOR

SCALE: 1 INCH=50 FEET  
◦ INDICATES IRON MONUMENT



AUDITOR'S SUBDIVISION NO. 331

KNOW ALL MEN BY THESE PRESENTS, that George C. Blixt and H. Ruth Blixt, husband and wife, owners and proprietors of the following described property, situated in the County of Hennepin and State of Minnesota, to wit: The East 205.0 feet of the South 5 Acres of the North 15 Acres of the S.E. 1/4 of the S.E. 1/4 of Section 16, Township 27 North, Range 24 West.

Have caused the same to be surveyed and platted as BLIXT ADDITION, and do hereby donate and dedicate to the public for public use forever the avenue, as shown on the annexed plat; and also subject to the utility and drainage easements, as shown on the annexed plat.

In witness whereof we have hereunto set our hands and affixed our seals this 26 day of DECEMBER A.D. 1957.

In presence of:  
R. F. McDonald  
C. B. St. John  
 Signed:  
George C. Blixt  
H. Ruth Blixt

STATE OF MINNESOTA } S.S.  
 COUNTY OF HENNEPIN } On this 26 day of DECEMBER A.D. 1957, before me, a Notary Public within and for said County and State, did personally appear George C. Blixt and H. Ruth Blixt, husband and wife, to me personally known to be the persons described in and who executed the foregoing instrument as their own free act and deed.

R. F. McDonald  
 Notary Public, Hennepin County, Minnesota  
 My Commission Expires April 6, 1962

I hereby certify that I have surveyed and platted the property described on this plat as BLIXT ADDITION; that this plat is a correct representation of said survey; that all distances are correctly shown on the plat in feet and decimals of a foot; that the monuments for guidance of future surveys have been correctly placed in the ground as shown on the annexed plat; that the outside boundary lines are correctly designated on the annexed plat; and that there are no wet lands or public highways to be designated on said plat other than as shown thereon.

James M. Halverson  
 Registered Land Surveyor, Minnesota Registration No. 3813

STATE OF MINNESOTA } S.S.  
 COUNTY OF Ramsey } The above certificate was subscribed and sworn to before me, a Notary Public within and for said County and State on this 19<sup>th</sup> day of December A.D. 1957.

Donald H. Campbell  
 Notary Public, Ramsey County, Minnesota  
 My Commission Expires 4 June 1963

This plat was checked and approved on this 17<sup>th</sup> day of December A.D. 1957.

Howard W. Parkins by: Alver R. Tuernan deputy  
 County Surveyor, Hennepin County, Minnesota

This plat was approved and accepted by the Village Council of the Village of Bloomington, Minnesota at a regular meeting thereof held this \_\_\_\_\_ day of \_\_\_\_\_ A.D. 19\_\_\_\_.

VILLAGE COUNCIL OF THE VILLAGE OF BLOOMINGTON, MINNESOTA

by \_\_\_\_\_ its Mayor

by \_\_\_\_\_ its Manager