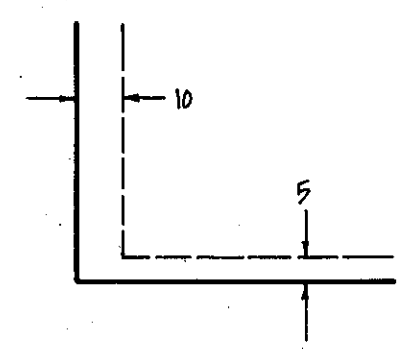
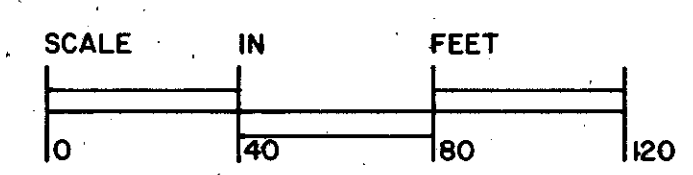
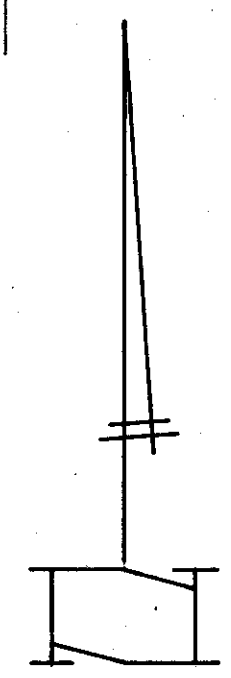
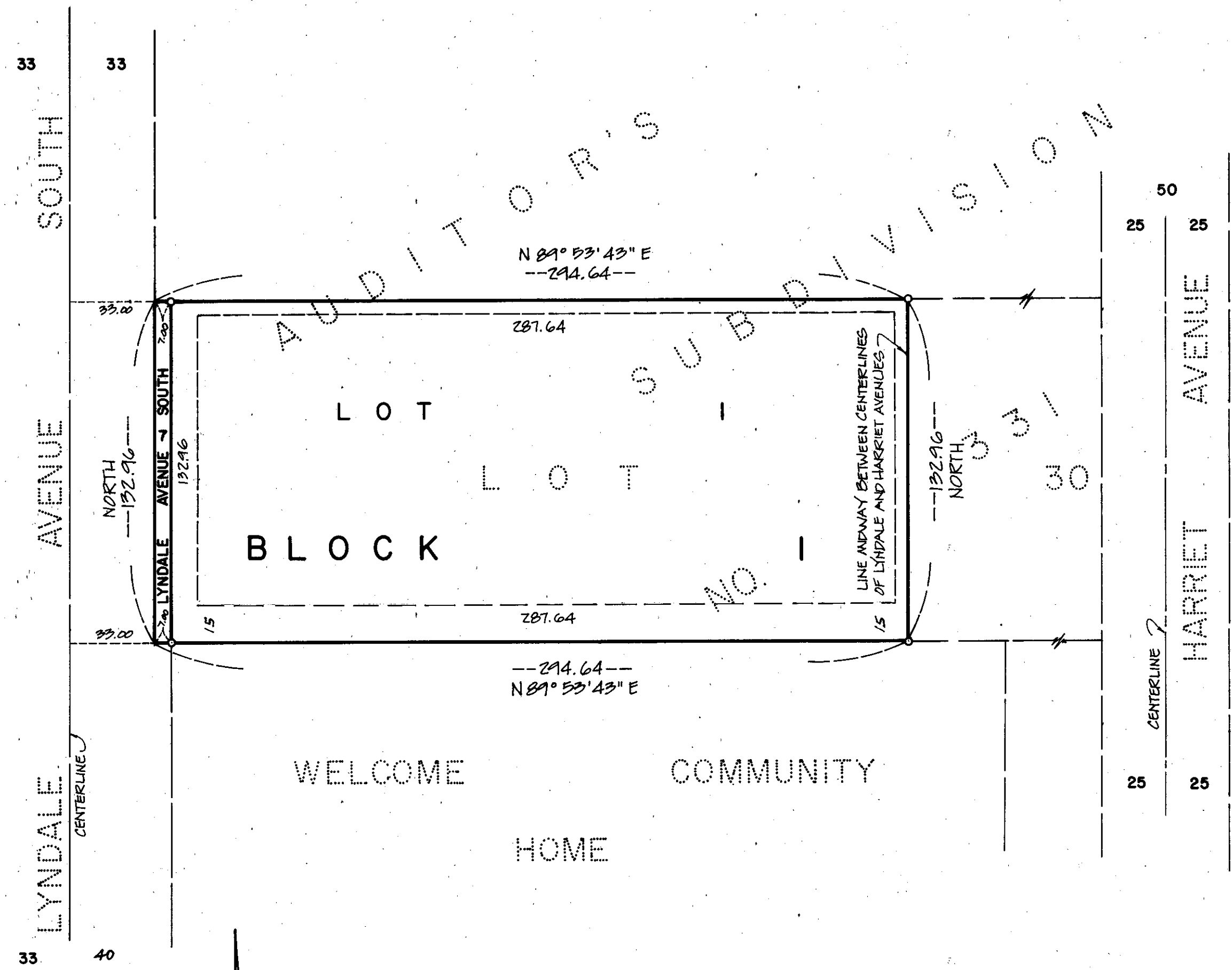


BEVIER ADDITION

C.R. DOC. NO. _____

CARLSON & CARLSON, INC.
LAND SURVEYORS

O DENOTES IRON MONUMENT
BEARINGS SHOWN ARE ASSUMED



UTILITY AND DRAINAGE EASEMENTS SHOWN THUS:
BEING 10 FEET IN WIDTH ADJOINING STREET LINES
AND 5 FEET IN WIDTH ADJOINING LOT LINES.

KNOW ALL MEN BY THESE PRESENTS:

That Joseph H. BeVier and Rella J. BeVier, his wife, owners and proprietors and L-Grow Company, a partnership under the laws of the State of Minnesota, mortgagee of the following described property situated in the County of Hennepin and State of Minnesota to wit:

That part of Lot 30 "Auditor's Subdivision Number 331, Hennepin County, Minnesota," lying West of a line drawn midway between the center lines of Lyndale Avenue and Harriet Avenue, according to the recorded plat thereof on file and of record in the office of the County Recorder, Hennepin County, Minnesota.
Have caused the same to be surveyed and platted as BEVIER ADDITION and do hereby donate and dedicate to the public for public use forever the avenue and easements for utility and drainage purposes as shown on the plat. In witness whereof said Joseph H. BeVier and Rella J. BeVier, his wife, have hereunto set their hands and seals this 8th day of MARCH 1983.

In witness whereof said L-Grow Company has caused these presents to be signed by a General Partner this 8th day of MARCH 1983.

SIGNED: Joseph H. BeVier
Joseph H. BeVier
Rella J. BeVier
Rella J. BeVier
BY: Donald G. Langewisch
L-GROW COMPANY
General Partner

STATE OF MINNESOTA
COUNTY OF HENNEPIN

This instrument was acknowledged before me this 8th day of MARCH 1983 by Joseph H. BeVier and Rella J. BeVier, his wife.

JOYCE W. M. COUTURE
NOTARY PUBLIC - MINNESOTA
HENNEPIN COUNTY
My Commission Expires Feb. 2, 1990

Joyce W. Couture
Notary Public, Hennepin County, Minnesota
My Commission Expires Feb. 2, 1990

STATE OF MINNESOTA
COUNTY OF HENNEPIN

This instrument was acknowledged before me this 8th day of MARCH 1983 by DONALD G. LANGEWISCH a General Partner in L-Grow Company, a partnership, on behalf of said partnership.

STEPHEN D. RADTKE
NOTARY PUBLIC - MINNESOTA
SCOTT COUNTY
My Commission Expires July 1, 1989

Stephen D. Radtke
Notary Public, Hennepin County, Minnesota
My Commission Expires July 1, 1989

I hereby certify that I have surveyed and platted the property described on this plat as BEVIER ADDITION; that this plat is a true and correct representation of said survey; that all distances are correctly shown on the plat in feet and hundredths of a foot; that all monuments have been correctly placed in the ground as shown; that the outside boundary lines are correctly designated on this plat and that there are no wet lands to be designated on said plat.

Larry R. Couture
Larry R. Couture, Land Surveyor
Minnesota Registration No. 9018

STATE OF MINNESOTA
COUNTY OF HENNEPIN

The foregoing instrument was acknowledged before me this 28th day of February 1983 by Larry R. Couture, Land Surveyor.

JOYCE W. M. COUTURE
NOTARY PUBLIC - MINNESOTA
HENNEPIN COUNTY
My commission expires Feb. 2, 1990

Joyce W. Couture
Notary Public, Hennepin County, Minnesota
My Commission Expires Feb. 2, 1990

BLOOMINGTON, MINNESOTA

This plat of BEVIER ADDITION was approved and accepted by the City council of the city of Bloomington, Minnesota, at a regular meeting thereof held this _____ day of _____, 1983. If applicable, the written comments and recommendations of the Commissioner of Transportation and the County Highway Engineer have been received by the city or the prescribed 30 day period has elapsed without receipt of such comments or recommendations, as provided by Minnesota Statutes, Section 505.03, Subdivision 2.

CITY COUNCIL OF THE CITY OF BLOOMINGTON, MINNESOTA

BY _____ Mayor BY _____ Manager

PROPERTY TAXATION DEPARTMENT, Hennepin County, Minnesota
I hereby certify that there are no delinquent taxes for all years prior to _____ for lands described on this plat. Dated this _____ day of _____, 1983.

Vernon T. Hoppe, Director by _____ Tax Clerk

SURVEY DIVISION, Hennepin County, Minnesota
Pursuant to Chapter 810, Minnesota Laws of 1969, this plat has been approved this _____ day of _____, 1983.

Robert L. Bakka, Hennepin County Surveyor by _____

COUNTY RECORDER, Hennepin County, Minnesota
I hereby certify that the within plat of BEVIER ADDITION was filed in this office this _____ day of _____, 1983, at _____ o'clock _____ M.

R. Dan Carlson, County Recorder by _____ Deputy

