

ARI ASHTON PIETIG ADDITION

R.T. DOC. NO. _____

KNOW ALL PERSONS BY THESE PRESENTS: that The Galeon Company, a Minnesota partnership, fee owner, and A. Pietig Properties, LLC, a Minnesota limited liability company, contract purchaser, of the following described property situated in the County of Hennepin, State of Minnesota to wit:

Lots 4 and 5, Block 4, "NICOLLET THIRD ADDITION".

Have caused the same to be surveyed and platted as ARI ASHTON PIETIG ADDITION and do hereby dedicate to the public for public use forever the drainage and utility easements as created by this plat. In witness whereof said The Galeon Company, a Minnesota partnership, has caused these presents to be signed by its proper officer this 22 day of December, 2017.

Signed: The Galeon Company, a Minnesota partnership

Todd Paul Froya
Todd Paul Froya, Vice President

STATE OF MN

COUNTY OF Hennepin

The foregoing instrument was acknowledged before me this 22 day of December, 2017, by Todd Paul Froya, Vice President of The Galeon Company, a Minnesota partnership, on behalf of the partnership.

Adam J. Fuchs
Printed Notary Name

[Signature]
Signature
Notary Public, Hennepin County, Minnesota.

My Commission Expires 01-31-2022

In witness whereof said A. Pietig Properties, LLC, a Minnesota limited liability company, has caused these presents to be signed by its proper officer this 17 day of December, 2017.

Signed: A. Pietig Properties, LLC, a Minnesota limited liability company

Andrew G. Pietig
Andrew G. Pietig, President

STATE OF MN

COUNTY OF Hennepin

The foregoing instrument was acknowledged before me this 22 day of December, 2017, by Andrew G. Pietig, President of A. Pietig Properties, LLC, a Minnesota limited liability company, on behalf of the company.

Carol Jackson
Printed Notary Name

[Signature]
Signature
Notary Public, Hennepin County, Minnesota.
My Commission Expires 01-31-2019

SURVEYOR'S CERTIFICATION

I, Paul B. Schoborg, do hereby certify that this plat was prepared by me or under my direct supervision; that I am a duly Licensed Land Surveyor in the State of Minnesota; that this plat is a correct representation of the boundary survey; that all mathematical data and labels are correctly designated on the plat; that all monuments depicted on the plat have been or will be correctly set within one year as indicated on the plat; that all water boundaries and wet lands, as defined in Minnesota Statutes, Section 505.01, Subd. 3, as of the date of this certification are shown and labeled on the plat; and that all public ways are shown and labeled on this plat.

Dated this 11 day of December, 2017.

Paul B. Schoborg
Paul B. Schoborg, Licensed Land Surveyor
Minnesota License No. 14700

STATE OF MN

COUNTY OF Wright

This instrument was acknowledged before me this 11 day of December, 2017, by Paul B. Schoborg, a Licensed Land Surveyor.

Kimberly Kay Pivec
Printed Notary Name

[Signature]
Signature
Notary Public, Wright County, Minnesota.
My Commission Expires 12/1/20

BLOOMINGTON, MINNESOTA

This plat of ARI ASHTON PIETIG ADDITION was approved and accepted by the City Council of the City of Bloomington, Minnesota, at a regular meeting thereof held this ___ day of _____, 20__ and said plat is in compliance with the provisions of Minnesota Statutes, Section 505.03, Subd. 2.

CITY COUNCIL OF BLOOMINGTON, MINNESOTA

By *[Signature]* Mayor

By *[Signature]* City Manager

RESIDENT AND REAL ESTATE SERVICES, Hennepin County, Minnesota

I hereby certify that the taxes payable in 20__ and prior years have been paid for land described on this plat, dated this ___ day of _____, 20__.

Mark V. Chapin, County Auditor

By _____ Deputy

SURVEY DIVISION, Hennepin County, Minnesota

Pursuant to MN. STAT. Sec. 383B.565 (1969), this plat has been approved this ___ day of _____, 20__.

Chris F. Mavis, County Surveyor

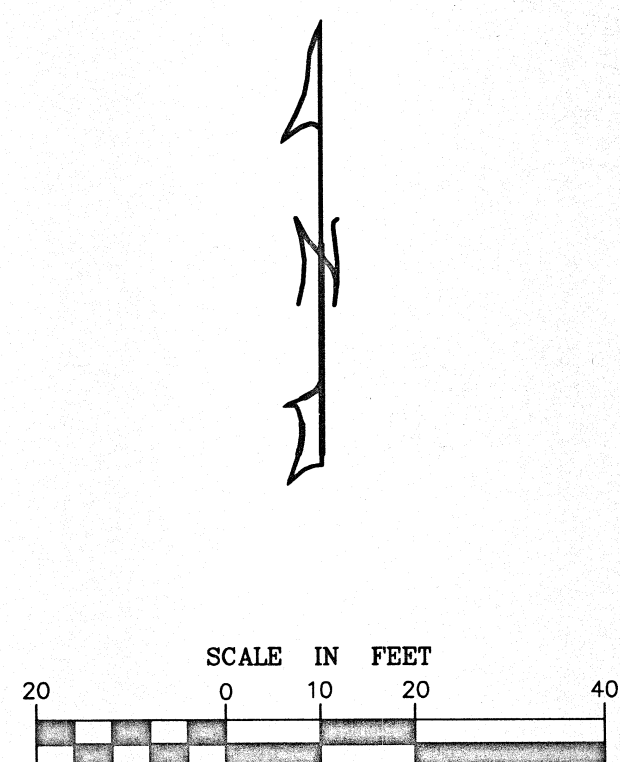
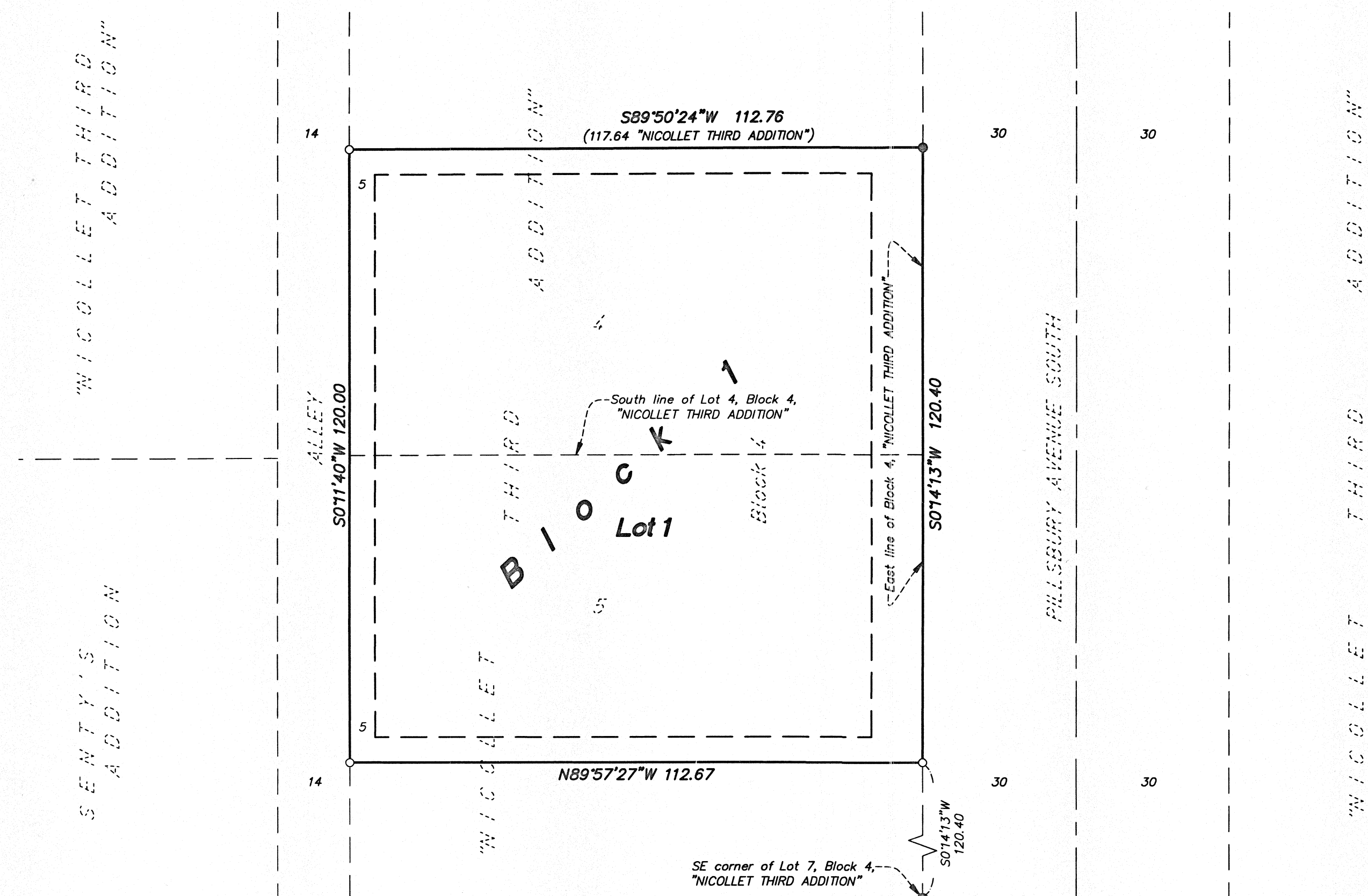
By _____

REGISTRAR OF TITLES, Hennepin County, Minnesota

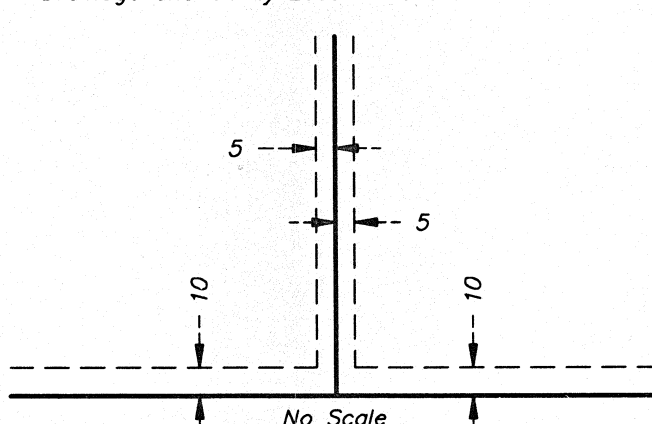
I hereby certify that the within plat of ARI ASHTON PIETIG ADDITION was filed in this office this ___ day of _____, 20__ at ___ o'clock __M.

Martin McCormick, Registrar of Titles

By _____ Deputy



Drainage and Utility Easements are shown thus:



Drainage and Utility Easements being 10 feet in width and adjoining right of way lines, unless otherwise indicated and being 5 feet in width and adjoining lot lines, unless otherwise indicated.

Basis of bearing statements: The east line of Block 4, "NICOLLET THIRD ADDITION" is assumed to bear South 0 degrees 14 minutes 13 seconds West.

Legend

- Denotes monument found 1/2 inch iron pipe, unless otherwise shown.
- Denotes 1/2 inch by 14 inch iron monument set and marked by L.S. No. 14700.

