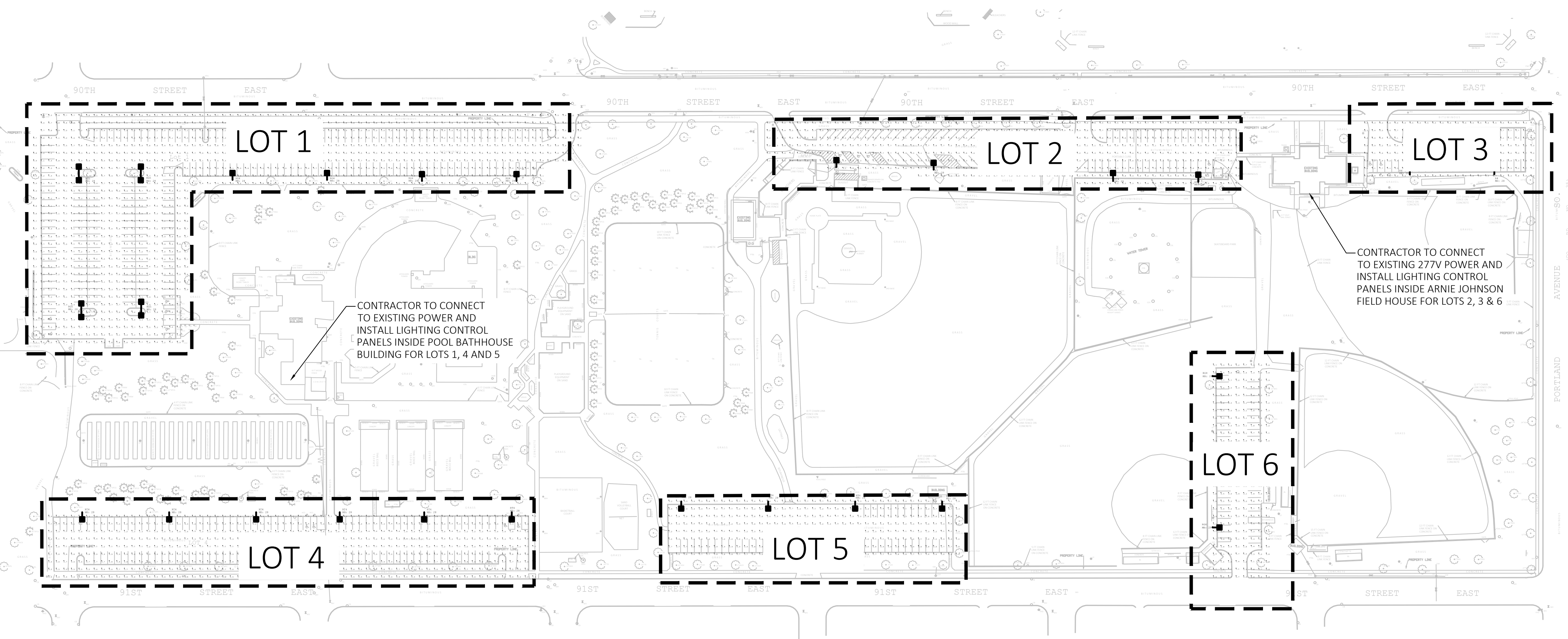
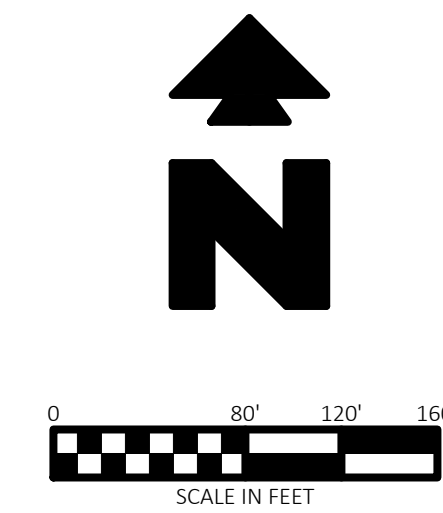


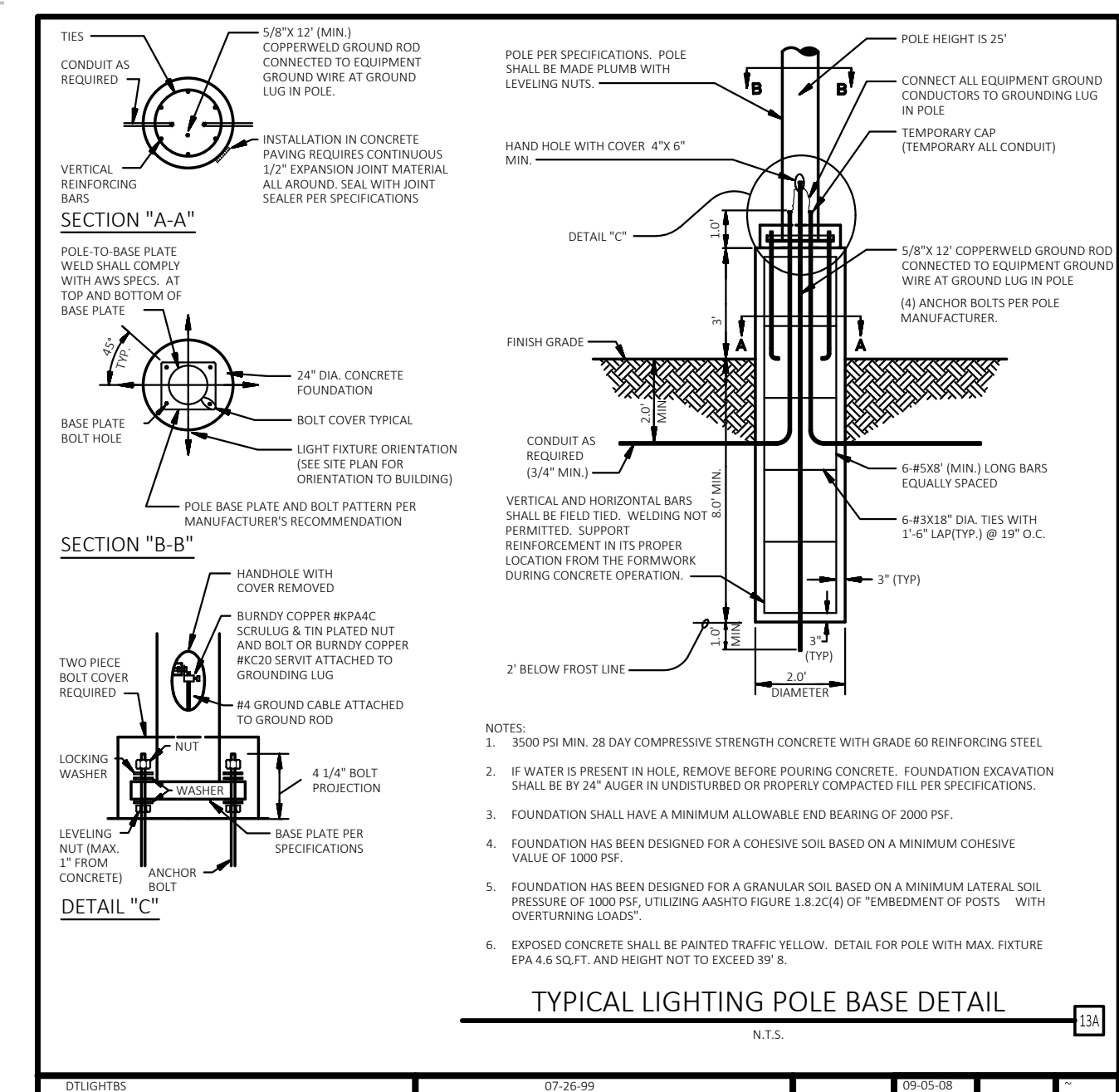
Symbol	Qty	Label	Arrangement	Lum. Lumens	Watt	Description	Lum. Watts	Total Watts
	2	R3	SINGLE	21864	0.810	USA R2R-LED-111-W-80LED-700mA-NW-28FT MH	173.6	347.2
	2	R4	SINGLE	21699	0.810	USA R2R-LED-1V-80LED-700mA-NW-28FT MH	173.6	347.2
	7	RG4	SINGLE	29424	0.810	USA R2R-G-LED-1V-PF-120LED-700mA-NW-28FT MH	260.1	1820.7
	4	RG5	BACK-BACK	22046	0.810	USA R2R-G-LED-VS-W-80LED-700mA-NW-28FT MH	174	1392
	13	RT4	SINGLE	19767	0.810	USA R2R-LED-1V-PF-80LED-700mA-NW-28FT MH	173.6	2256.8

Label	CalcType	Units	Avg	Max	Min	Avg/Min	Max/Min
SITE	ILLUMINANCE	FC	1.44	5.1	0.1	14.40	51.00
LOT 1	ILLUMINANCE	FC	1.83	4.7	0.8	2.29	5.88
LOT 2	ILLUMINANCE	FC	1.34	2.9	0.6	2.23	4.83
LOT 3	ILLUMINANCE	FC	1.60	2.6	0.8	2.60	4.33
LOT 4	ILLUMINANCE	FC	1.20	2.3	0.5	2.40	4.60
LOT 5	ILLUMINANCE	FC	1.32	3.0	0.7	1.89	4.29
LOT 6	ILLUMINANCE	FC	2.11	3.7	1.0	2.11	3.70



CONTRACTOR TO CONNECT TO EXISTING POWER AND INSTALL LIGHTING CONTROL PANELS INSIDE POOL BATHHOUSE BUILDING FOR LOTS 1, 4 AND 5

CONTRACTOR TO CONNECT TO EXISTING 277V POWER AND INSTALL LIGHTING CONTROL PANELS INSIDE ARNIE JOHNSON FIELD HOUSE FOR LOTS 2, 3 & 6



- NOTES:
- 3000 PSI MIN. 28 DAY COMPRESSIVE STRENGTH CONCRETE WITH GRADE 60 REINFORCING STEEL
 - IF WATER IS PRESENT IN HOLE, REMOVE BEFORE POURING CONCRETE. FOUNDATION EXCAVATION SHALL BE BY 24\"/>
 - FOUNDATION SHALL HAVE A MINIMUM ALLOWABLE END BEARING OF 2000 PSF.
 - FOUNDATION HAS BEEN DESIGNED FOR A GRANULAR SOIL BASE ON A MINIMUM LATERAL SOIL PRESSURE OF 2000 PSF. UTILIZING AASHTO FIGURE 1.8.2(4) OF "EMBEDMENT OF POSTS" WITH OVERTURNING LOADS.
 - FOUNDATION SHALL BE PAINTED TRAFFIC YELLOW. DETAIL FOR POLE WITH MAX. FIXTURE EPA 4.8 SQ.FT. AND HEIGHT NOT TO EXCEED 39 FT.

JOB # 30576 DRAWING: 30576-VALUING-PROLOG LAST SAVED BY: AUGUSTINE LOCATION: P:\30000\30576\01\Drawings\Design\Rev-01\Valley View Lighting\30576-VALUING-PROLOG.dwg

30576	1/18/18	ALC	ALC	AIR	AIR
CEI PROJECT NO.	INITIAL DATE	DPOR	PM	DES	DRW

CEI Engineering Associates, Inc.
 ENGINEERS • PLANNERS • SURVEYORS
 LANDSCAPE ARCHITECTS • ENVIRONMENTAL SCIENTISTS

2025 Centre Pointe Blvd., Suite 210 (651)452-8960
 Mendota Heights, MN 55120 (651)452-1149

CITY OF BLOOMINGTON
 301 EAST 90TH STREET
 BLOOMINGTON, MN

VALLEY VIEW LIGHTING PLAN	REV DATE 3/19/18	SHEET NO. C3
	REV-0	

© 2018 CEI ENGINEERING ASSOCIATES, INC.